



FINLEY

2026

PROFILE

FINLEY INFRA COMPANY

شركة فينلي إنفرا



FINLEY

About Us

Finley is a leading solutions provider with a long standing and well-established reputation for serving the industrial and commercial construction sectors.

We provide versatile services including industrial support, manpower supply, equipment rental, industrial construction, maintenance, subcontracting, and trading.

Operating from Al Jubail in the Kingdom of Saudi Arabia, we continually seek new opportunities and leverage our extensive operational experience to support and develop new business ventures.

Vision

vision is dependent on satisfying and retaining our professional clients who understand and value the importance of time savings.

Mission

To perform for our customers the highest level of quality construction services at fair and market competitive prices



FINLEY

Safety Policy:

Committed to a strong safety policy that protects its staff, its property, and the public from accidents. The management supports and encourages all employees to maintain safety at the job site.

Quality Policy:

We at Finley Infra Tech Company aim to achieve and sustain excellence in all our activities. Quality is the responsibility of every employee. Ethical workmanship and customer satisfaction are paramount. We shall provide our services and maintain credibility in the market through the quality of our work at all times. We are further committed to developing a motivated workforce with a sense of pride in the organization, which will lead us toward becoming the best in the industry while working in harmony with the environment.



Services

General Contracting:

By virtue of engagement & managing large-scale construction projects, Civil construction becomes inevitable.

We have successfully completed number of civil contracts on various projects meeting the stringent deadlines and strict project specifications for our customers.

Our experienced & competent team and a range of construction equipment required for carrying out civil construction works smoothly makes us successful.

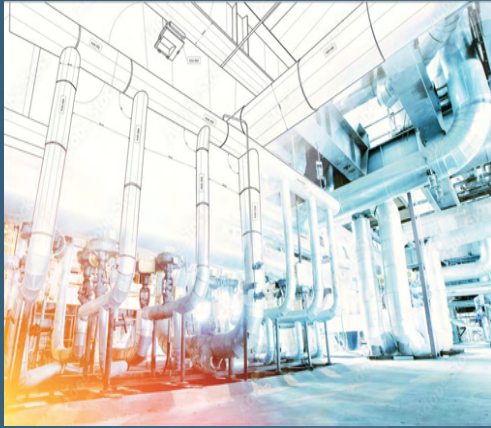


Services

Project: Dammam 2nd Industrial Area

Client: Future Ceramic

Scope: Plant Restoration



MEP



Facade Aluminium



Gazing



Fabrication



Piping & Fabrication



Civil



Electrical



Instrumentations



Fit Out Fittings

Services

Project:
MEP

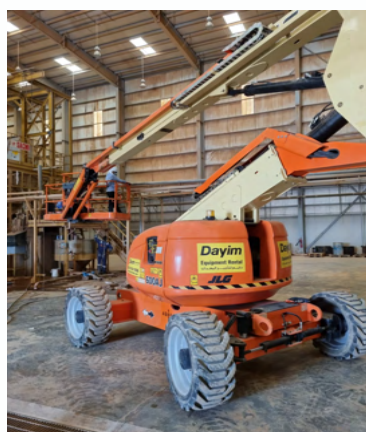
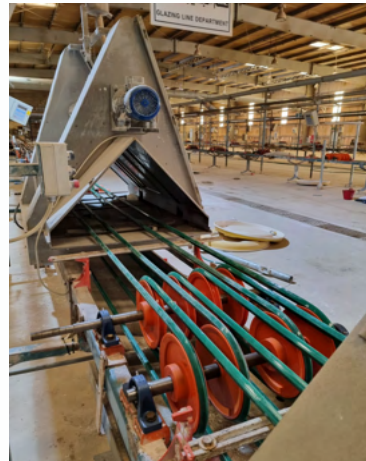
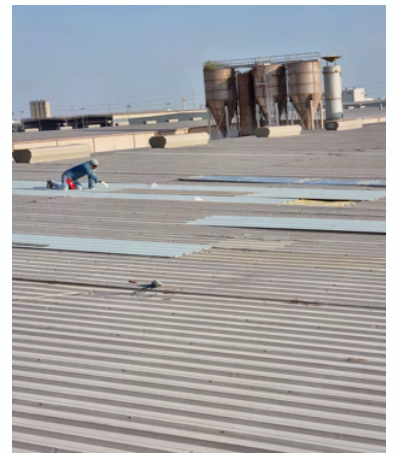


Services

Projects:

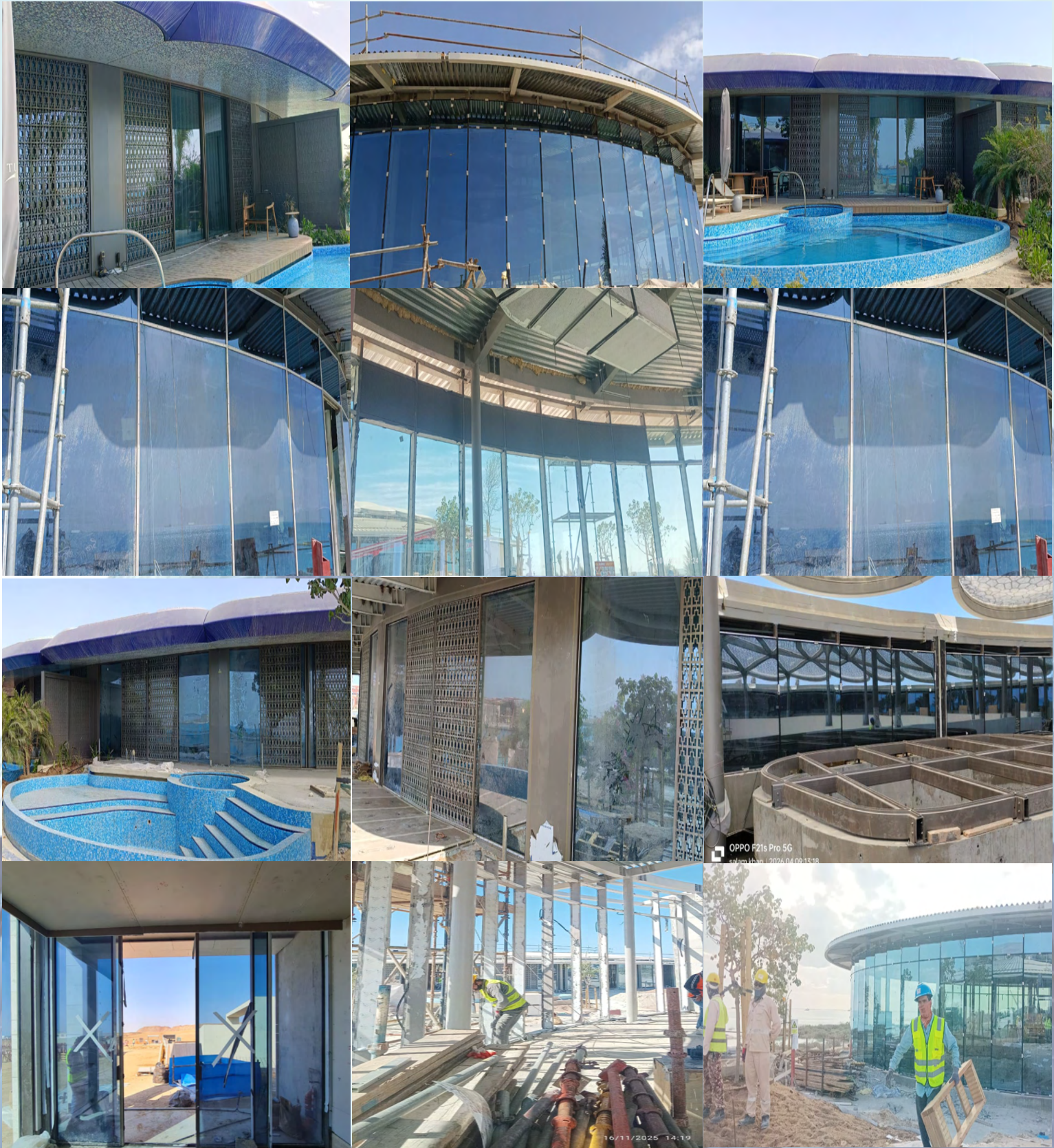
Facade Aluminium Glazing & Fabrication

We provide complete façade aluminium glazing and fabrication solutions for residential, commercial, and industrial projects. Our scope includes aluminium glazing systems, curtain walls, doors and windows, structural glass, ACP cladding, and custom metal fabrication, delivered with modern techniques, durable materials, and high-quality finishing..



Services

Project - Red Sea (Amala)
Contractor -Facade Solution



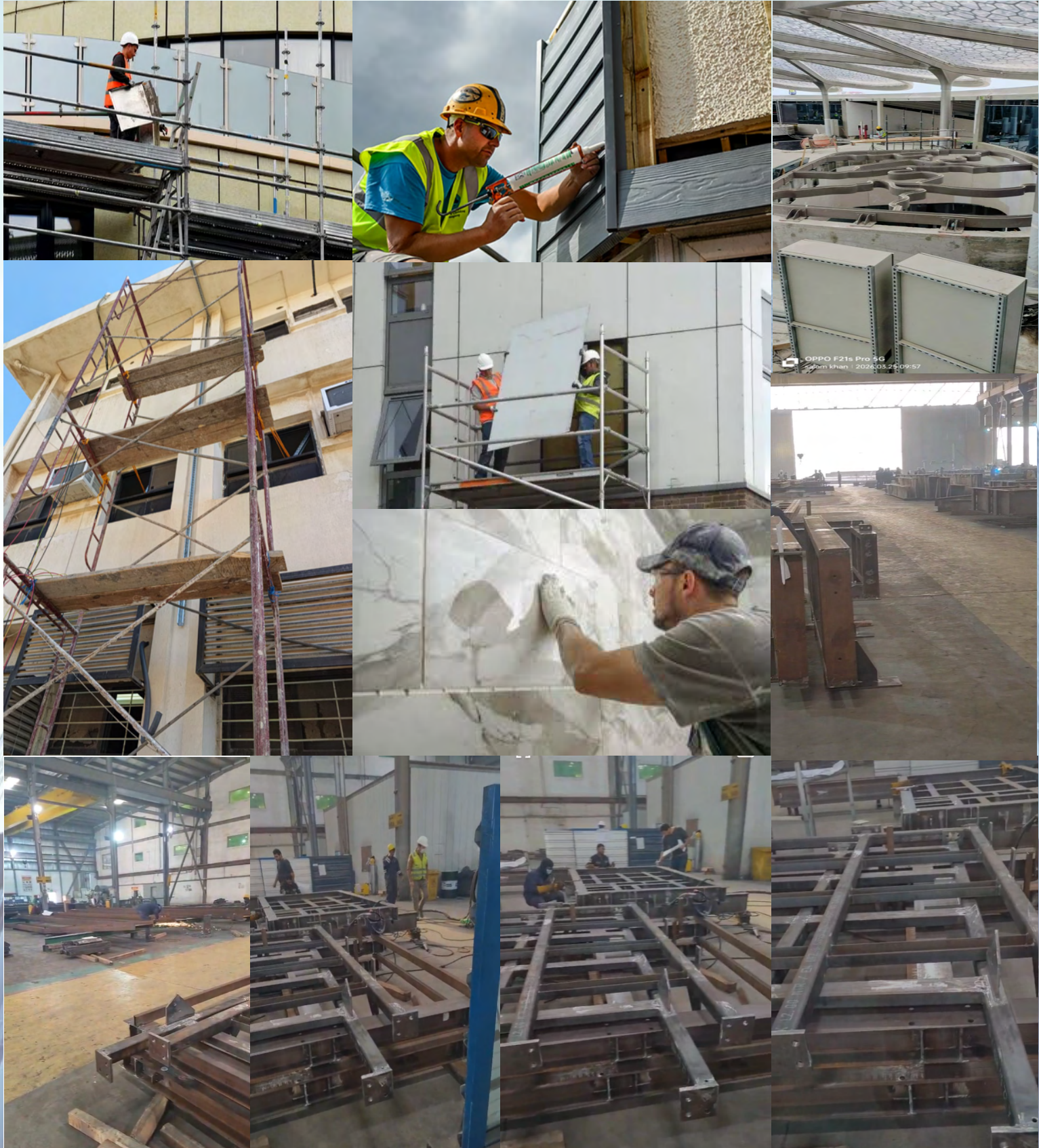


FINLEY

Services

Project - Red Sea Umluj (HC-1)

Contractor - SALCO | Marble & Stone Cladding Works:



Services

Projects: Piping & Fabrication





FINLEY

Services

Civil & Building Works Solutions:

Building and Civil engineering work are living workplaces where the prerequisites constantly change. Finley strives to provide good planning and design in providing Civil works and Building works for its clients.

Finley's engineering, procurement and construction expertise includes traditional disciplines, architectural, civil, electrical, mechanical and structural engineering, as well as process and mechanical design.

Finley's experience in civil works include concrete foundations for plant heavy equipment and Petroleum Construction Civil works, Pipe Rack fabrication and erection.

Finley's experience in Building works include residential apartments and villas, commercial buildings and malls, steel structural buildings, plant and refinery building works, scaffolding & erection and road construction.

Finley has rich experience and expertise in planning, design and in execution of civil works and building works.



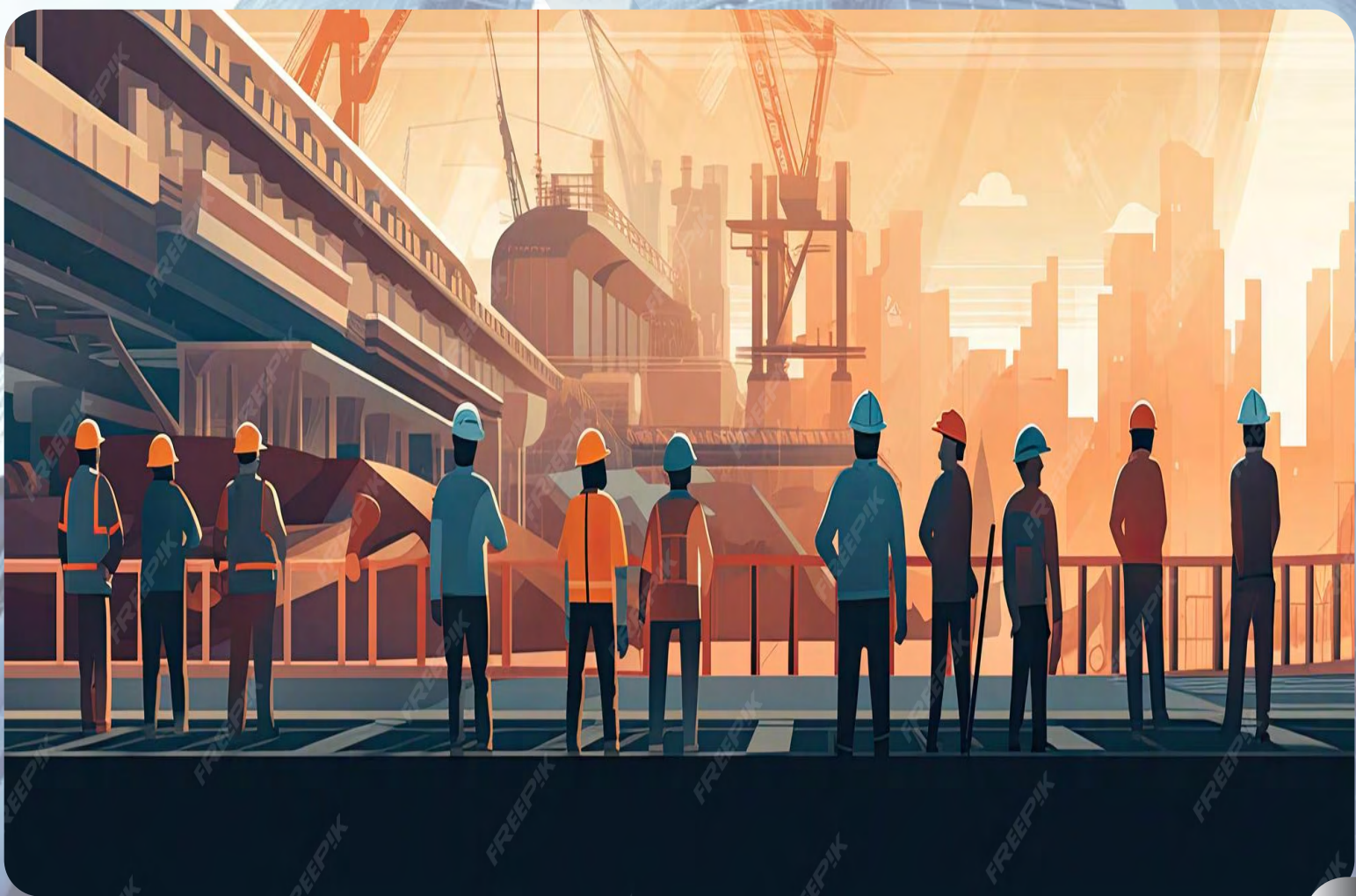


FINLEY

Services

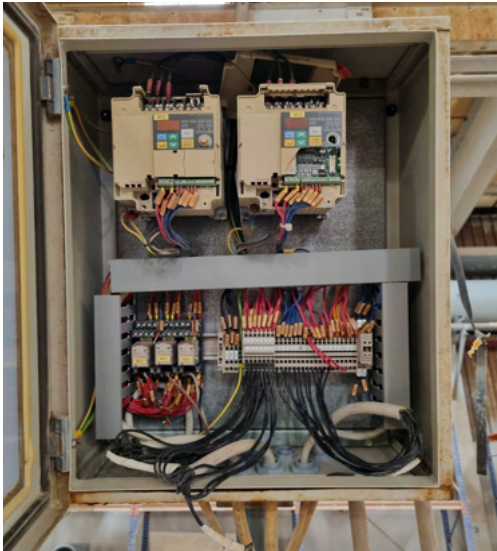
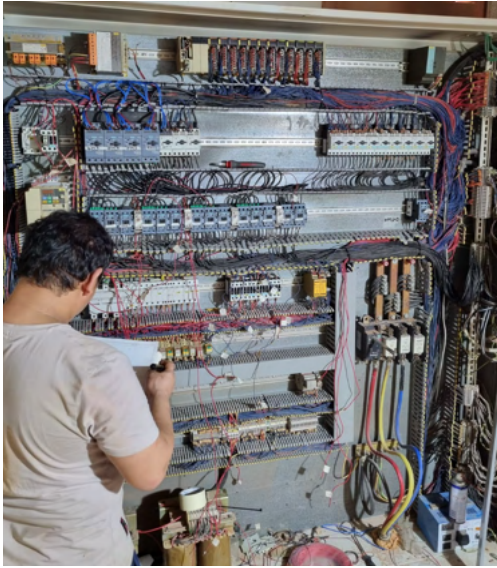
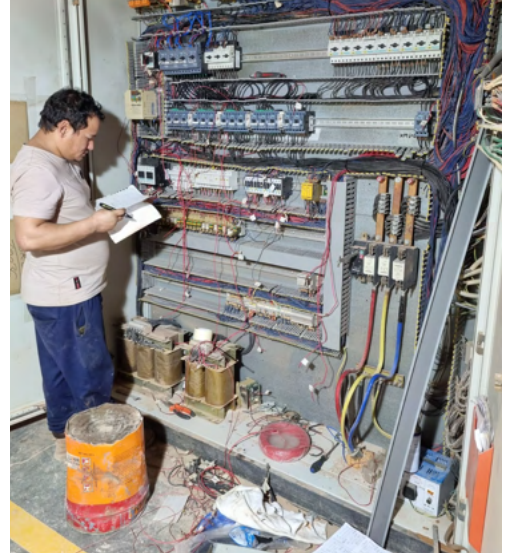
Civil Works:

Finley provides comprehensive civil works solutions for industrial, commercial, and infrastructure projects. Our scope includes site preparation, excavation, concrete works, foundations, structural repairs, masonry, flooring, and finishing works. We deliver end-to-end civil execution with a strong focus on quality workmanship, safety compliance, structural integrity, and timely project completion. From minor repair and restoration works to large-scale civil construction, our team ensures reliable execution, efficient site coordination, and compliance with project specifications and industry standards.



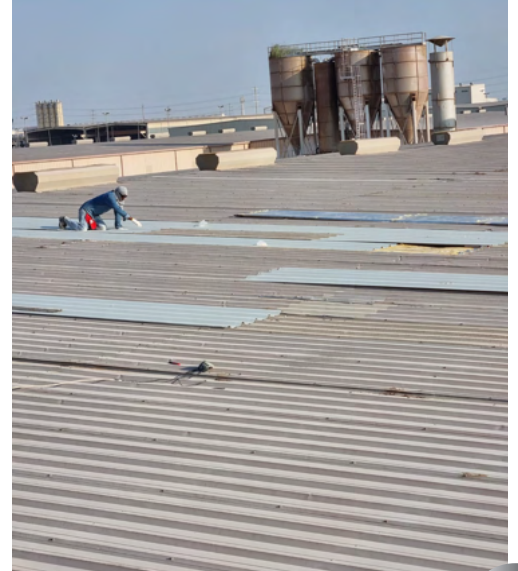
Services

Project: Electrical Work



Services

Project: Fit Out Fittings



Services

Types of Solar Installation - By Mounting:

1. Rooftop Solar Mounting

Installed on the roof of homes, offices, or factories. This is the most common type.

Flat Roof Mount: Uses ballast or frames on flat roofs. You can set the tilt angle.

Sloped Roof Mount: Rails are fixed on tiled/tin roofs. Panels follow the roof's angle.

Pros: No extra space needed, lower cost, easy maintenance

Best for: Homes, shops, schools

2. Ground Mounted Solar

Panels are installed on structures built on the ground.

Standard Ground Mount: Frame fixed at one angle

Pole Mount: 4–10 panels on a single pole – saves space with more height

Tracking System: Rotates with the sun, gives 15–25% more power

Pros: Easy cleaning, no size limit, can set best angle

Cons: Needs land, higher cost

Best for: Farms, large projects, places with no roof space

3. Solar Carport / Canopy

Solar panels installed above parking shades.

Pros: Gives parking + electricity, keeps cars cooler in summer

Cons: Structure cost is higher

Best for: Malls, offices, society parking

Services

Types of Solar Installation - By Mounting:

4. BIPV - Building Integrated PV

The solar panel is part of the building itself.

Solar Roof Tiles: Solar tiles replace normal roof tiles

Solar Facade: Solar in the building's walls/glass

Pros: No separate space needed, looks attractive

Cons: Very expensive, slightly lower efficiency

Best for: New modern buildings

5. Floating Solar

Installed on water bodies like ponds, lakes, or dams.

Pros: No land needed, water keeps panels cool = more electricity

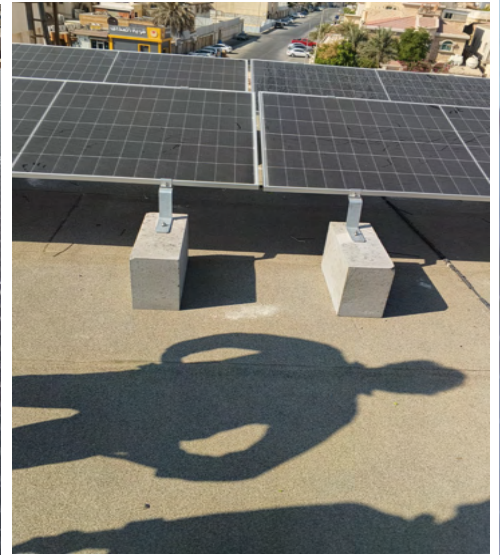
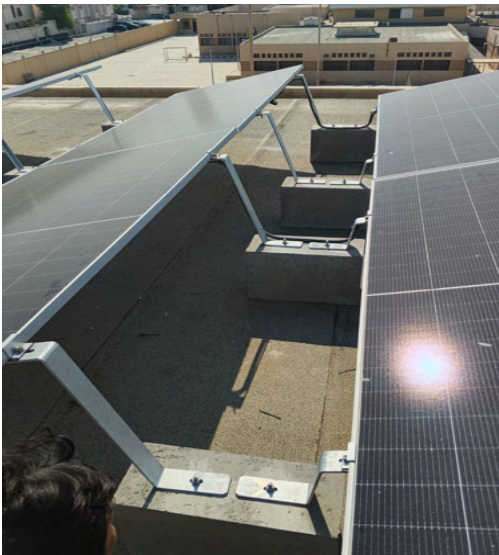
Cons: Only for large projects, maintenance is difficult

Best for: Govt projects, large water bodies



Services

Project - Solar Installation:





FINLEY

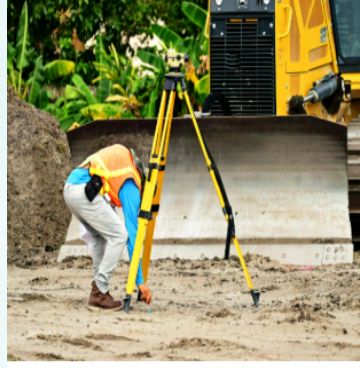
Services



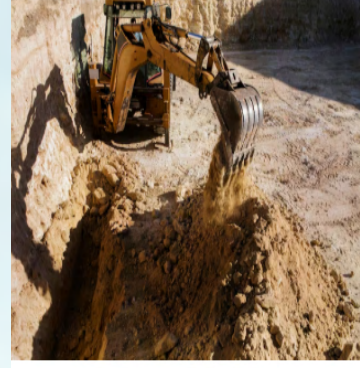
Building Construction



Scaffold/Concrete Work



Land Surveying



Earth Works



Land Leveling



Backfilling & Compaction



Drainage Systems



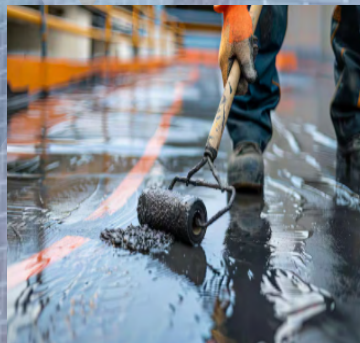
Dewatering System



Construction Of Access Roads



Construction Of Reinforced Cement Concrete



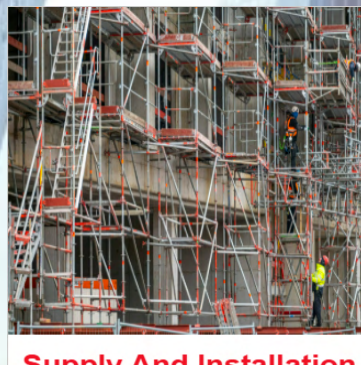
Water Proofing Works



All Kind Of Painting Works Including Protective



Coating System



Supply And Installation Of Scaffolding System



Kerb Stone & Paver Blocks.



Architectural, Interior & Structural Design Works



FINLEY

Services

Construction Equipment Rental:

Specialized in various classes of Equipment Rental Services. Finley provides a unique rental proposition - an alternative to "buy". We provide comprehensive range of equipment on rental basis as per clients' requirement. Finley ensures equipment from reliable and established majors in the Kingdom to our clients. Finley provides construction equipment on rent at cost effective prices for a flexible length of time. This equipment is widely used for different kinds of construction and repair. Finley has professionals with outstanding service and commitment for catering to our clients.





FINLEY

Services

Our Equipment Rental Section Includes:



Excavators



Bulldozers



Crawler Cranes



Mobile Cranes



Backhoe Loaders



Forklift



Mini Loaders



Rollers



Man Lift

Services

Finley Infra Company Services Includes:

Electrical Works, Mechanical Works, Fire Systems, Scaffolding Works.



Electrical



Mechanical



Fire System



Scaffolding Works

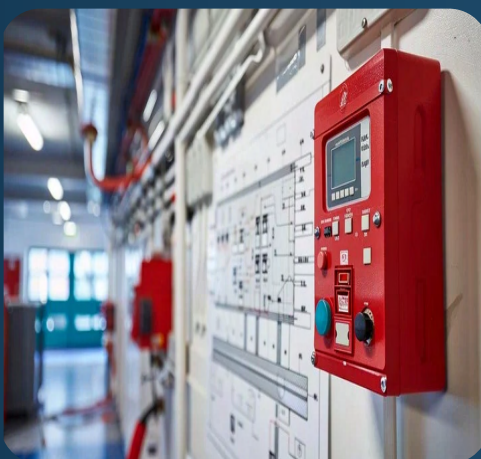


FINLEY

Services

Fire Alarm Systems includes:

MKII Soft & Hard Addressable Fire Alarm System, Conventional Fire Alarm Systems, Wireless Fire Alarm Systems, Gas Extinguishing Systems, Standalone Fire Alarm Systems, Domestic Fire Alarms



Services

Manpower Supply:

At times, you need the best overseas manpower services. With our experienced team, we make recruitment simple, efficient, and reliable. We provide top professionals for all sectors, from planning and interviews to hiring and work-site performance.

Our updated database ensures ready availability of qualified personnel, and we take full responsibility for the recruitment process. We specialize in providing timely and professional manpower solutions for dynamic and sensitive industries, guaranteeing efficiency and quality at every step.



Services

Manpower Supply:

We provide reliable and skilled manpower solutions to support diverse industrial and commercial sectors. Our workforce is carefully selected, trained, and deployed to meet project-specific requirements with a strong focus on productivity, safety, and operational efficiency. From short-term staffing to long-term workforce support, we ensure qualified personnel for seamless project execution across multiple industries.

Construction

Oil And Gas

Hospitality

IT And Telecom

Manufacturing

Engineering

Energy And Resources

Mining



Services

Trading:

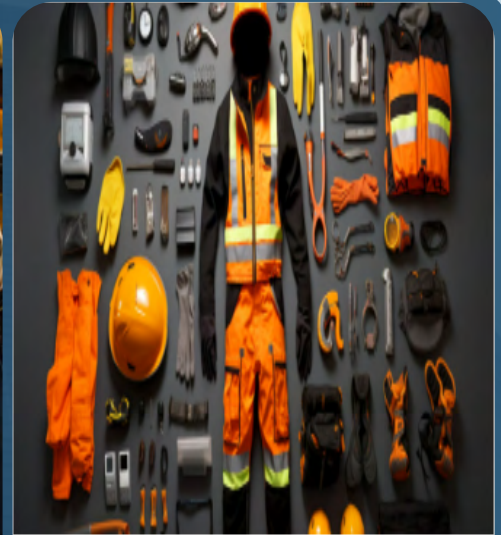
Finley is a premier trading company specializing in reliable supply and procurement solutions for general contracting, industrial, and commercial projects, ensuring efficiency, quality, and seamless project support.



Industrial Hand Tools & Power Tools



Welding & Fabrication Tools & Accessories



Safety PPE And General Materials



Lifting Equipment And Marine Tackles



General Building Materials & Masonry Tools



FINLEY INFRA TECH COMPANY LTD



info@finley-infra.com



(966)563-330-998



4379 13th Street, Al Dabab
Distric Al Jubail 35712, KSA



www.finley-infra.com